



Treo™ 750v
SMARTPHONE



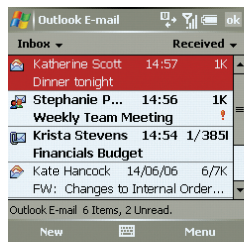
A smart way to run Windows Mobile®

Phone, email, web, 3G connectivity and Windows Mobile®, now easier than ever before.

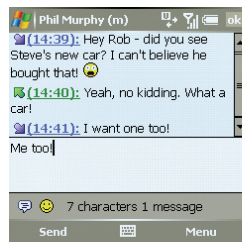
The Palm®Treo™ 750v smartphone helps you stay connected on your terms. It combines phone, email, messaging, web and Windows Mobile® with Palm enhancements in one easy-to-use device that makes it easier than ever to stay productive.¹ Receive email from multiple business or personal accounts.¹ Access the web right from where you're standing on fast, 3G networks.² Use Microsoft® Office Mobile applications to review and edit business documents wherever you happen to be. Or relax and listen to your favourite music, play video clips, or shoot and send photos right on your device.

Quick facts

- Easy-to-use, all-in-one smartphone with email, organiser, and web browser¹
- Powerful Windows Mobile 5.0 with Palm enhancements
- Mobile access to multiple business and personal email accounts
- Integrated SMS/MMS with chat view and dedicated Inbox
- Internet Explorer® Mobile
- Word, Excel® Mobile and PowerPoint® Mobile applications, plus PDF viewer
- 3G/UMTS network for fast data access²
- 1.3 megapixel digital camera also captures video
- Windows Media® Player 10 Mobile for music and video
- Built-in Bluetooth® wireless technology
- Voice Command for voice dialing and Calendar access



Your choice of email
Set up centralised access to up to six business and personal email accounts.



Threaded SMS/MMS messages
Chat-style view lets you easily keep track of conversations.

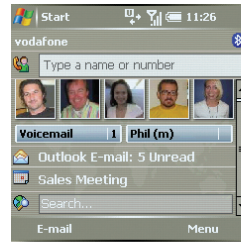
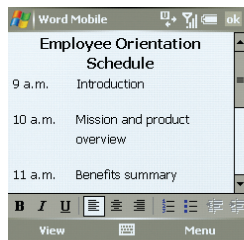


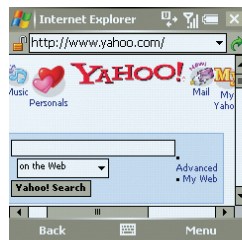
Photo speed dial
Create photo speed dials for the people you call the most.



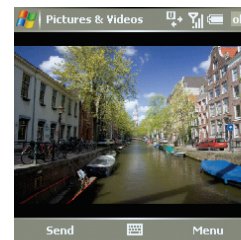
Integrated calendar
See daily appointments at a glance or view by week or month.



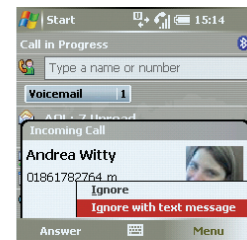
View native attachments
Open documents, make changes, and email them right back.



Faster web browsing
Pages load at broadband-like speed on global 3G network.²



Shoot crisp, clear images
And capture video, too, with the 1.3 megapixel camera.



Ignore with SMS
Unable to take a call? Automatically respond with a private text message.¹

¹Within mobile coverage area only. Email, web, and messaging require data services from service provider at an additional cost. ISP and/or VPN may also be required.

²Within 3G/UMTS mobile data service coverage area only. Actual data speeds vary based on network capacity and application design. Backwards compatible with EDGE and GPRS networks.

Expect more from a smarter phone.

- Palm® innovations deliver seamless operation and unprecedented ease on the Windows Mobile platform.
- Dial by name, access contact information, or search the web¹ right from the Today screen. Even dial by photo or use Voice Command in English.
- Manage calls from one screen with centralised caller ID, speakerphone and conference calling. Stay on top of multiple voicemail accounts with a single set of intuitive, onscreen controls.
- Add unique ringtones, photos or videos to your Contacts so you know who's calling at a glance or by sound.

Stay on top of email, even out of the office.

- Get out-of-box compatibility with Microsoft® Exchange Server 2003 for push delivery of email, Contacts, Calendar and Tasks from your corporate Outlook account.³
- Set up access to personal POP3 or IMAP accounts, including Gmail or Yahoo!¹
- Choose from a wide range of email options, including BlackBerry Connect™.^{1,2}
- Access to other corporate email accounts is also available using third-party software, sold separately.
- Quickly and easily compose email messages or edit documents with the integrated full QWERTY keyboard.

Surf the web and more on your 3G/UMTS smartphone.

- Get driving directions, stock quotes, and weather on the go.
- Tap a URL in any document or message to automatically launch Internet Explorer Mobile® with support for familiar controls like Back and Favourites.
- Quickly download large attachments, photos, and videos. Purchase music, games and productivity software over the air and use them straight away.⁴
- Use your Treo™ 750v smartphone as a wireless modem to extend 3G speeds to your laptop.^{4,5}

Send text and multimedia messages seamlessly.

- Threaded, chat-style view lets you easily keep track of a conversation as it unfolds.
- Take a photo and immediately attach it to a message without tedious navigation from the camera to the messaging application.¹

Enjoy rich multimedia.

- Use the 1.3 megapixel camera to take crisp, clear digital images and videos, then view them on the clear, bright screen.⁶
- Carry your favourite music without carrying a separate device. Play MP3 files, as well as streaming audio and video¹ files on the go.
- 60MB of dedicated user storage gives you plenty of room for files. Optional miniSD expansion cards can hold gigabytes more data.

Customise to suit your style.

- Personalise your Treo™ 750v by adding optional software applications and hardware accessories to enhance your mobile experience.
- Talk hands-free with a compatible Bluetooth® stereo headset.



¹ Within mobile coverage area only. Email, web, and messaging require data services from service provider at an additional cost. ISP and/or VPN may also be required.
² Visit www.palm.com for BlackBerry Connect download instructions.
³ Direct Push Technology requires Microsoft Exchange Server 2003 with Service Pack 2.
⁴ Within 3G/UMTS mobile data service coverage area only. Actual data speeds vary based on network capacity and application design. Additional charges may apply. Backwards compatible with EDGE and GPRS networks.
⁵ Compatible devices must have Bluetooth wireless technology.
⁶ Length of video contingent upon available memory.



What's included in the box:

Palm Treo 750v smartphone, rechargeable battery, AC travel charger, stereo headset, stylus, USB sync cable, user documentation, Getting Started CD

Included software:

ActiveSync® 4.2 (desktop version), Bluetooth 1.2, Bubble Breaker, Calculator, Camera, Dynamite!, File Explorer, Internet Explorer Mobile, Messaging, Microsoft® Outlook® 2002 (desktop version), Microsoft Outlook Mobile, Microsoft® Office Mobile Suite, Phone, Pictures and Video, Pictel PDF Viewer, Quick Tour, Search, Solitaire, Sounds Manager, Terminal Services Client, Voice Command, Windows Media® Player 10 Mobile

Desktop system requirements:

Windows 2000 or XP with USB port and CD-ROM drive

Product information:

- Communication:** GSM/GPRS/EDGE/UMTS radio, GSM bands: 850/900/1800/1900, UMTS bands: 850/1900/2100
- Phone features:** Personal speakerphone, hands-free headset jack, microphone mute option, TTY/TDD compatibility, 6-way calling
- Memory:** 128MB / 60MB nonvolatile flash memory available to user
- Processor:** 300MHz Samsung processor
- Expansion:** miniSD card slot
- Battery:** Removable 1200 mAh Lithium-ion, up to 4.5 hours talk time, 10 days standby
- Operating System:** Windows Mobile® 5.2.2 Pocket PC Phone Edition
- Camera:** 1.3 megapixel camera with 2x digital zoom and video capture support, automatic light balance
- Size/weight:** 111 mm x 58 mm x 22 mm 154 g
- Connectivity:** Bluetooth 1.2 wireless technology, Infrared (IR)
- Display:** 240 x 240 colour touchscreen with support for over 65,000 colours
- Input:** Built-in backlit QWERTY keyboard, 5-way navigator